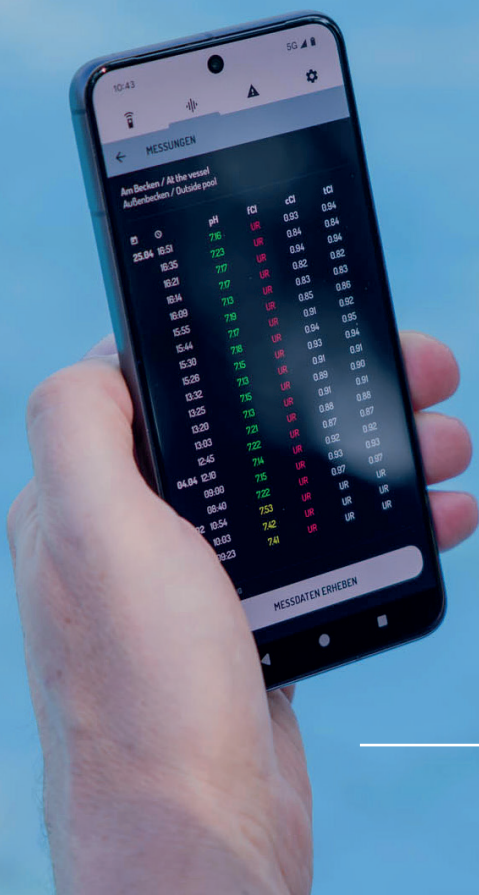


L A B S

Product catalogue 2025



LILIAN LABS

EDITORIAL

Dear customers,

my name is Dr. Alexander Rohr. I am co-founder and managing director of Lilian Labs GmbH and responsible for marketing and sales. I am delighted to present the current product catalogue 2025 to you.

As you may already know, we are always in close contact with our customers. Only by experiencing how you use LILIAN at your place makes it possible for us to offer a product to you, that makes your daily work even easier and also saves you money.

Of course, we have listened to your feedback. What do you like about LILIAN, what can we still improve, what do you need for optimal use? We have documented this feedback and used it to continuously improve the system over the past years.

This has resulted in this year's catalogue highlight: We are delighted to present LILIAN2! We have integrated all your suggestions into a new version of LILIAN. You can find more details on the next page!

I hope you enjoy reading,

kind regards



Contact me

Dr.-Ing. Alexander Rohr
Founder & CEO

alexander.rohr@lilianlabs.com
+49 531 387 274 36

INTRODUCING THE NEW LILIAN2

We have listened: LILIAN2 includes the most frequently requested improvements from our customers. Benefit from new features that enable an even more efficient use of LILIAN in your public pool!

The most important improvements at a glance:

- Now compatible with Android and Apple
- Almost no more seal replacement needed
- Battery indicator directly on the device
- Digital operating diary

Additional features:

- All functions in one single free app
- Direct measurements without registration possible with 10 memory slots
- Measurements without internet with later pool assignment also possible
- Automatic adjustment of measured values possible, e.g. for saline water
- Improved security with optional two-factor authentication



PRODUCT CATALOGUE 2024

GENERAL INFORMATIONS

- Our mission 04
- What is the LILIAN water analysis system all about? 05
- How does it work? 06
- What makes the LILIAN unique? 07
- Sustainability 08
- LILIAN Technology 09
- Certificates and precision 10
- References 11
- Sales Partners 12

PRODUCTS AND PRICING

- LILIAN Pro 13
- LILIAN Wave 14
- SensoSticks 15
- LILIAN Manager 17
- Accessories 19
- Services 21

GET IN TOUCH

- Contact data 22

OUR MISSION

The goal of Lilian Labs

Water is a valuable resource whose quality is under acute threat due to many influences. At Lilian Labs, we want to ensure that everyone can be sure that the water available to them is of optimum quality, regardless of where and how it is used.

This is why Lilian Labs and its 26 employees have been bringing the LILIAN technology for mobile water analysis, which they developed themselves, to more than 10 European countries over the past 7 years. LILIAN is 100% made in Germany.

01

INNOVATION

Our drive: Enhance existing methods better and better.

03

HEALTH

Our motto: Clean water analysis with no risk to health - mixing chemicals is oldschool.

05

EFFICIENCY

Our concern: Save time for you and your employees when checking your water quality.

02

SCIENCE

Our methods: Scientifically sound and recognized.

04

SUSTAINABILITY

Our goal: A system that is of long-term and sustainable benefit to all users.

06

QUALITY

Our principle: Compliance with high quality standards through development and production in Germany.



WHAT IS THE LILIAN WATER ANALYSIS SYSTEM ALL ABOUT?

WE HAVE TURNED SOMETHING COMPLICATED INTO SOMETHING SIMPLE

The LILIAN water analysis system, which is already available in many European countries, greatly simplifies the regular measurement of water quality in swimming pool water.

It is a new type of photometer with a connected digital platform on which the water values are recorded digitally. The special trick: the LILIAN takes over the usually necessary chemical preparation of the water sample for the user.

This means that hygiene parameters such as pH value, chlorine or total alkalinity can be determined in under 60 seconds at the touch of a button. Errors in sample preparation can no longer occur and every swimming pool employee receives the same precise values.

The measurement results are then stored digitally. The system also automatically checks whether the limit values you have specified have been exceeded. In the event of critical measured values, selected persons are automatically informed seconds after the measurement. This creates seamless digital documentation and allows you to react immediately if necessary. The measurement data can also be integrated directly and fully automatically into any existing software via an interface.

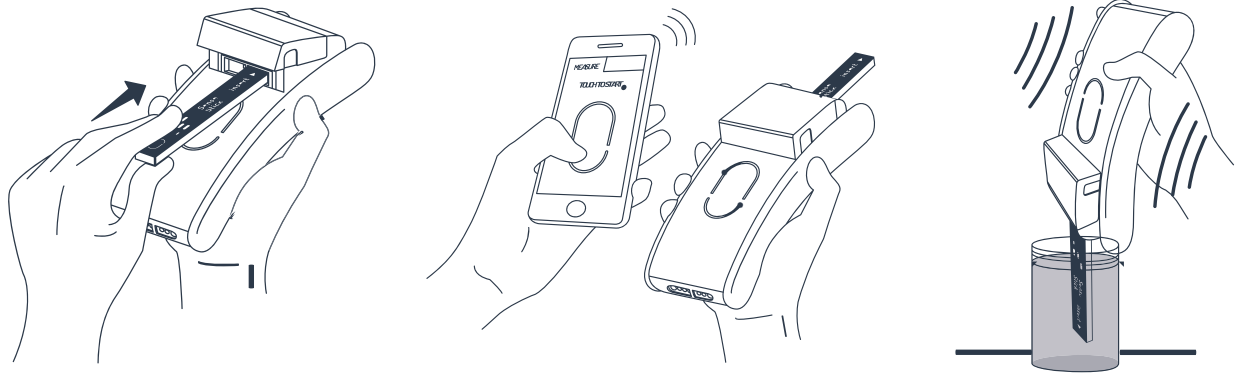
Water testing has never been so easy, because our LILIAN hand-held measuring device has just a single button. No frills or complicated procedures, fast and with maximum precision - with the certainty of having done everything right.



HOW DOES IT WORK?

Your water measurements at the touch of a button

Wireless, compact and simple - that's the LILIAN measuring device for comprehensive determination of your water quality at the touch of a button.



Simply insert the SensoStick into the LILIAN, connect it to the app and start the measurement at the touch of a button. The rest of the measurement process takes less than a minute. The measuring accuracy complies with DIN19643.

The measurement data is displayed on the smartphone within seconds and can be saved immediately. In addition, you will be able to use the digital functions of the system to support you in your further work with the system.



WHAT MAKES THE LILIAN UNIQUE?

The LILIAN system is unique in the world.

With the LILIAN, you'll get unique advantages that no other photometer offers. Simplicity and time savings are particularly important elements if you are also faced with a shortage of skilled labour. With the LILIAN, healthcare professionals can concentrate on the essentials and even assistants can carry out reliable hygiene parameter measurements.



PRECISE RESULTS

The revolutionary technology ensures fast and accurate measurement results.



SAFE WATER TESTING

No more tedious handling of chemicals. Protecting your employees health.



HUGE TIME SAVING

Within 60 seconds, the LILIAN System prepares, analyzes and documents all relevant values.



EASY HANDLING

The LILIAN measuring device is handy, wireless and easy to use.



SIGNIFICANT COST SAVING

Efficient staff deployment creates free space for other important tasks.



ENVIRONMENTALLY FRIENDLY DISPOSAL

The SensoSticks can be returned to us and will be recycled in an environmentally friendly way.



SUSTAINABILITY

Material Selection

The basic SensoStick mould is made of pure Plexiglas without the addition of any other substances. This makes used SensoSticks very suitable for further use.

Fewer chemical substances

The innovative design of the SensoSticks with microlabs ensures maximum accuracy with fewer chemicals. The SensoStick type for the pool area, for example, uses 40 times less chemical substances than photometric measurements with standard cuvettes.

Environmentally friendly packaging and shipping

Lilian Labs only sends parcels climate-neutrally with the GoGreen label. The filling material used when sending parcels is usually made from recycled cardboard remnants. No plastic is used for the sales boxes either.

SensoStick-Recycling

Returned SensoSticks are already being broken down by Lilian Labs into their components at specialised companies and returned to the raw material cycle.

In areas where plastic recycling is not possible, energy recovery is used. Primary energy sources such as crude oil or gas are usually used to generate energy and heat. This consumes valuable resources. Used SensoSticks can also be utilised instead. As the kilns operate at very high temperatures, the exhaust gases are free of pollutants. The chemical residues in the SensoSticks are completely decomposed during the process.



We were honoured with the „Golden Wave Award 2022“ in the „Green Technology“ category for our sustainability concept.

LILIAN TECHNOLOGY

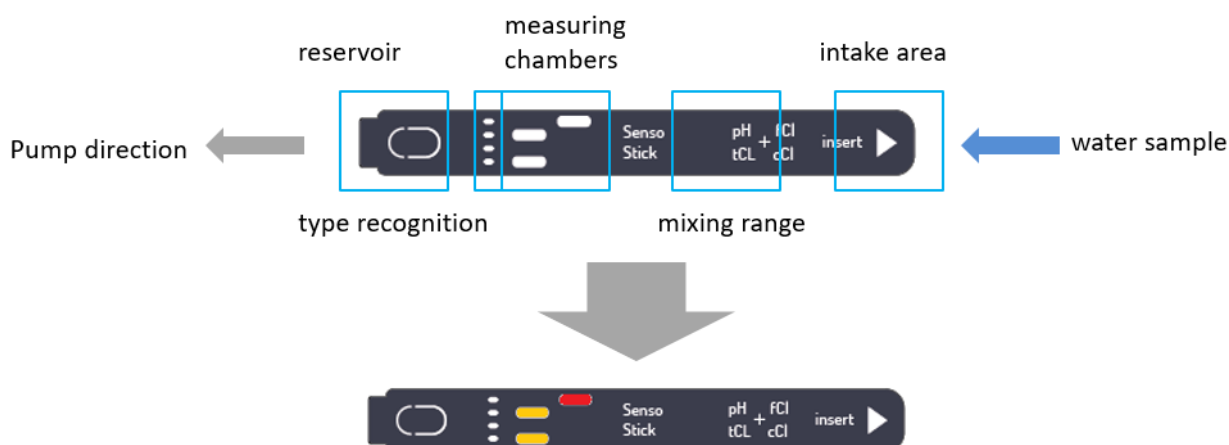
How exactly does the measuring method with LILIAN work?

The LILIAN measuring device is an advanced photometer that no longer uses cuvettes with which water samples have to be taken individually and chemicals added.

Instead, with the LILIAN you simply insert the SensoStick into the measuring device. This is a microfluidic element on which several micro-scale cuvettes are integrated. As soon as the measurement is started by pressing a button, a pump in the measuring device draws water into the SensoStick. The water sample is divided into different microchannels, each of which absorbs the chemicals and takes on the characteristic colour.

A microlab integrated into the SensoStick takes over the manual sample preparation required by conventional photometers. The SensoStick contains measuring windows, which the measuring device uses to determine the colouration and derive the corresponding water value.

As the measuring principle is based on the requirements stipulated by DIN19643 and ISO 7393-2 and “only” the manual sample preparation is automated, the LILIAN fully complies with the requirements of the authorities for regular monitoring of measurement and control technology. By automating and parallelising the measurements, the user is able to work significantly faster than before and is less prone to errors.



CERTIFICATES AND PRECISION

High measuring accuracy for the determination of water samples

Below you can see the Lilian Labs certificates for chlorine and pH. The measurement data and results on which this document is based were determined and calculated by an independent German institute. Feel free to compare these values with the certificates of other manufacturers, we are among the best!

Method validation data – Free chlorine

Method

Name	SensoStick Pool
Article number	#5012
Measurement	Free chlorine (fCl); sodium hypochlorite solution
Method	Photometry DPD method
Settlement proceedings	DIN EN ISO 7393-2
Measuring range	0.03 - 4.00 mg/l
Photometer	Lilian Pro
Cuvette	10 mm, PMMA

Process characteristics

Absolute standard deviation (N=10)	
Concentration level 0.060 mg/l Cl ₂ [s ₁]	0.0067 mg/l (12.7 %)
Concentration level 0.99 mg/l Cl ₂	0.013 mg/l (1.3 %)
Confidence interval (95%) at 1 mg/l	± 0.021 mg/l
Detection limit [3 - s ₁]	0.020 mg/l
Limit of quantification [10 - s ₁]	0.067 mg/l
Coefficient of determination R ²	> 0.99, related to the recovery function in the working range of 0.03 mg/l - 4.00 mg/l Cl ₂

Method validation data – pH value

Method

Name	SensoStick Pool
Article number	#5012
Measurement	pH value (pH)
Method	Photometry, indicator phenol red
Settlement proceedings	DIN EN ISO 10523
Measuring range	6,3 - 8,4
Photometer	Lilian Pro
Cuvette	10 mm, PMMA

Process characteristics

Measuring solution	Mean value (N = 3) pH value	Abs. Standard deviation (N = 3) pH units
pH 6.30 Buffer solution	6,33	0,010
pH 6.50 Buffer solution	6,48	0,029
pH 6.88 Buffer solution	6,84	0,006
pH 7.00 Buffer solution	7,03	0,021
pH 7.50 Buffer solution	7,64	0,012
pH 8.00 Buffer solution	8,13	0,000

REFERENCES

More than 1000 customers in over 10 countries swear by LILIAN!

Once you are convinced and start measuring with LILIAN, you will never stop! The time and cost savings as well as the simple handling are something you won't want to give up.

AQUANTIC

Center Parcs



**HOLSTEN
THERME**



bnnz

**:DÜSSELDORF
Bädergesellschaft**

**Europabad
Karlsruhe**



wellnest

SALES PARTNERS

Where to get the LILIAN measurement system?


Please contact us or the sales partner responsible for your country for an offer or more informations.

DRNÜSKEN
member of CF.GROUP 

WTG
DEUTSCHLAND

team AquaTec

Germany
Austria

SYCLOPE
Electronique 

France

ENVIROPROCESS
TECHNOLOGY FOR WATER TREATMENT

Scandinavia

VDH water technology 

Netherlands
Belgium

Swiss

 NIEDERER
SCHNEIDER AG
SEIT 1903

DRNÜSKEN
member of CF.GROUP 

Iceland

 **Laugin**

LILIAN PRO

THE LILIAN PRO FOR FREQUENT MEASUREMENT USE - NOW IN VERSION 2

Our LILIAN measuring device has only one button. In addition, an app that takes you by the hand, guides you through the measurement process and then documents everything automatically and digitally. Without frills or complicated processes, quickly and with the highest precision – with the certainty of having done everything right.

With the LILIAN water analysis system, time-consuming analysis procedures are a thing of the past: No more annoying sample preparation and post-processing, no more mixing of hazardous chemicals, no more errors in manual documentation. The time required for your work processes is reduced by 90%. This gives you and your employees more time to focus on what is really important.

- Simple measurement with the app at the push of a button
- Automatic sample preparation
- Precise measurement results through certified system (DIN19643 and ISO 7393-2)
- Digital documentation with the free LILIAN Manager
- Enormous time saving
- Everyone gets the same precise measurement results
- Incl. case and LILIAN measuring holder



LILIAN WAVE

THE LOWER COST VARIANT: THE LILIAN WAVE

Precise measurement is not only important for large pools and hotel chains. Customers who measure irregularly also need precise results. Health authorities, technicians and pool builders in particular can benefit from the LILIAN Wave.

With LILIAN Wave, you get exactly the same performance as with LILIAN Pro. The difference: When you buy the device, you already save compared to the LILIAN Pro. In addition, the SensoSticks type 'Pool CL Wave' and type 'Brom Br Wave' are available in pack sizes of 5 or more. Otherwise, there is no difference, the performance of the device and the SensoSticks are identical to the Pro variant. So you benefit from the advantages of LILIAN with fewer measurements.

LILIAN Manager can also be used free of charge.

- All the advantages of LILIAN Pro in a more affordable system
- All parameters available at Lilian Labs can be measured
- SensoSticks 'Pool CL Wave' are available in packs of 5 instead of packs of 250
- SensoSticks 'Pool CL' in packs of 250 are not measurable



SENSOSTICKS

SENSOSTICK TYPE „POOL CL“ AND “POOL CL WAVE”



Parameter	Accuracy	Measuring range
pH value	+ - 0,03	6,3 - 8,4
Chlorine free	+ - 0,03 mg/l	0,03 - 4,00 mg/l
Chlorine total	+ - 0,03 mg/l	0,03 - 4,00 mg/l
Chlorine combined	calculated	calculated

SENSOSTICK TYPE “POOL BR” AND “POOL BR WAVE”



Parameter	Accuracy	Measuring range
pH value	+ - 0,03	6,3 - 8,4
Bromine free	+ - 0,05 mg/l	0,05 - 9,00 mg/l
Bromine total	+ - 0,05 mg/l	0,05 - 9,00 mg/l
Bromine combined	calculated	calculated

SENSOSTICK TYPE “POOL CL HR”



Parameter	Accuracy	Measuring range
pH value	+ - 0,03	6,3 - 8,4
Chlorine free	+ - 0,1 mg/l	0,1 - 10,0 mg/l
Chlorine total	+ - 0,1 mg/l	0,1 - 10,0 mg/l
Chlorine combined	calculated	calculated

SENSOSTICK TYPE “KS4.3 / TA”



Parameter	Accuracy	Measuring range
Total alkalinity	+ - 0,1 mmol/l	0,1 - 5,0 mmol/l
	+ - 5,0 mg/l	5,0 - 250,0 mg/l
	(below 100 mg/l)	

SENSOSTICK TYPE "CYA" (ICA / CYANURIC ACID)



Parameter	Accuracy	Measuring range
ICA / Cyanuric Acid	+/- 5 mg/l (below 100 mg/l)	5 - 160 mg/l

SENSOSTICK TYPE "ACTIVE OXYGEN"



Parameter	Accuracy	Measuring range
Active oxygen	+/- 0,2 mg/l	0,2 - 20,0 mg/l

SENSOSTICK TYP "ClO2"



Parameter	Accuracy	Measuring range
Chlorine dioxide	+/- 0,05 mg/l	0,05 - 8,00 mg/l

LILIAN MANAGER

Cloud-based documentation tool with digital operating diary

Have you had enough of handwritten documentation and time-consuming transferring your water parameters to Excel? With the LILIAN Manager you can always keep an eye on your water quality from anywhere - in any facility, at every measuring location and at every measuring position. Recognise critical measured values immediately! Create reports and export the data to your PC or Mac.

The Manager can even be used as a digital operating diary. The LILIAN Manager can be used to digitally log both your measurement data measured with the LILIAN and all other values such as redox voltage, water temperature, etc.

And best of all, the LILIAN Manager can be used free of charge for all your pools:

- Cloud-based user and data management system
- Free evaluation and export tools
- No restriction on the number of users, measurements, locations, ...
- Digital operating diary: Logging of all measured values in your pools possible
- Automatic correction of measured values for special water, e.g. brine
- Integrated Direct measurements without registration
- Integrated Active chlorine calculation
- Available in 10 languages



Premium packages

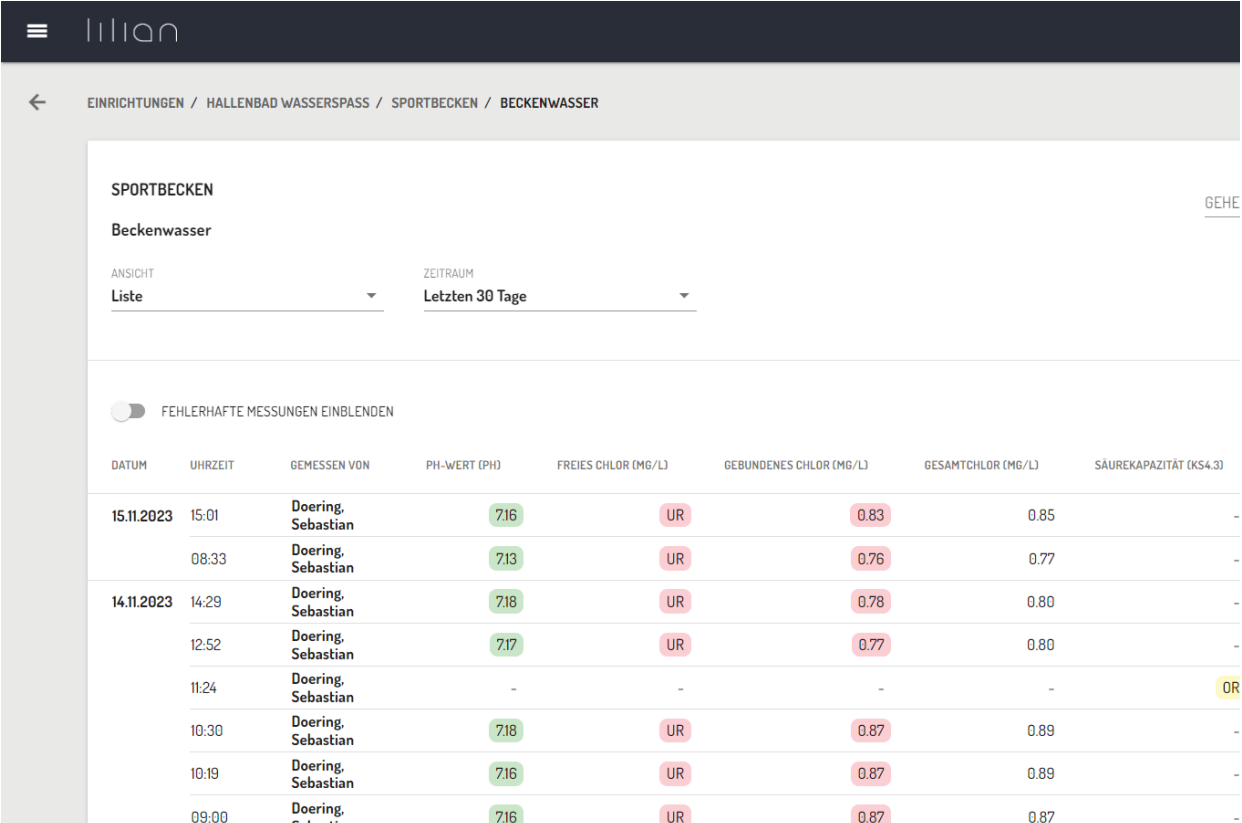
There are additional premium functions that the customer can use for a certain period of time against payment. As a rule, a licence runs for one year, in the discounted "Season Pass" only for half a year.

Limit value and alarm system

Configure specific threshold values for your parameters and receive a push notification or email if the threshold values are exceeded. Your threshold values are automatically highlighted in green, yellow and red, depending on the default range, so that you can see at a glance whether everything is OK.

Interface (client-based API)

With the Manager interface, we also offer you the option of automatically exporting your automatically export your data records to external IT structures. For example, existing software solutions such as pool and bath managers (e.g. TASKO), system software (e.g. dosing systems) can be supplied with the mobile measurement data recorded by the LILIAN via the interface.



The screenshot shows the LILIAN mobile application interface. At the top, there is a navigation bar with the LILIAN logo and a menu icon. Below it, a breadcrumb trail reads: EINRICHTUNGEN / HALLENBAD WASSERSPASS / SPORTBECKEN / BECKENWASSER. The main content area is titled "SPORTBECKEN" and "Beckenwasser". There are two dropdown menus: "ANSICHT" set to "Liste" and "ZEITRAUM" set to "Letzten 30 Tage". A toggle switch for "FEHLERHAFTES MESSUNGEN EINBLENDEN" is currently turned off. Below this is a table with the following columns: DATUM, UHRZEIT, GEMESSEN VON, PH-WERT (PH), FREIES CHLOR (MG/L), GEBUNDENES CHLOR (MG/L), GESAMTCHLOR (MG/L), and SAUREKAPAZITÄT (KS4.3). The table contains 8 rows of data for measurements taken on 15.11.2023 and 14.11.2023. Values for pH, free chlorine, and total chlorine are color-coded: green for good, yellow for warning, and red for critical. The total chlorine values are consistently 0.85, 0.77, 0.80, 0.80, 0.89, 0.89, and 0.87. The SAUREKAPAZITÄT values are mostly "-", with one "0R" on 14.11.2023 at 11:24.

DATUM	UHRZEIT	GEMESSEN VON	PH-WERT (PH)	FREIES CHLOR (MG/L)	GEBUNDENES CHLOR (MG/L)	GESAMTCHLOR (MG/L)	SAUREKAPAZITÄT (KS4.3)
15.11.2023	15:01	Doering, Sebastian	716	UR	0.83	0.85	-
	08:33	Doering, Sebastian	713	UR	0.76	0.77	-
14.11.2023	14:29	Doering, Sebastian	718	UR	0.78	0.80	-
	12:52	Doering, Sebastian	717	UR	0.77	0.80	-
	11:24	Doering, Sebastian	-	-	-	-	0R
	10:30	Doering, Sebastian	718	UR	0.87	0.89	-
	10:19	Doering, Sebastian	716	UR	0.87	0.89	-
	09:00	Doering, Sebastian	716	UR	0.87	0.87	-

ACCESSORIES



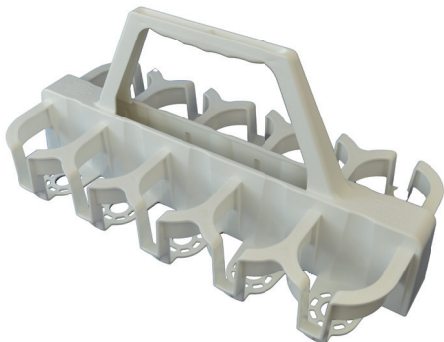
SMARTPHONE

Dust and waterproof smartphone (IP68), LILIAN apps pre-installed, as a single purchase without starter set.



MAINTENANCE ITEMS

Seals, springs and tweezers available separately for easy maintenance of the measuring slots.



CUP HOLDER 10-FOLD

Simply collect water samples and then measure them centrally and directly one after the other to save even more time.



DIAGNOSIS SET

To regularly check the function of the LILIAN measuring device.



LILIAN CHARGER

A practical tool: Simply place the LILIAN in the tray and it will load automatically every time you put it down.

SERVICES

MANUFACTURER MAINTENANCE

Lilian Labs stands for precision in water analysis. In daily use, your Lilian device is exposed to high loads. We therefore recommend annual maintenance of your device at Lilian Labs. In addition to the assurance that your system is working correctly, you will also receive a certificate confirming this. And best of all, you receive a one-year guarantee after every service!

Your benefits at a glance:

- o General inspection of the measuring device incl. minor repairs
- o Replacement of springs and seals
- o If necessary: Replacing the batteries
- o Installing the latest software
- o Checking the measuring accuracy
- o Certificate to confirm the measuring accuracy
- o Warranty extension for 1 year
- o Replacement device for the duration of maintenance



CONTACT DATA

Take advantage of the opportunity for a free trial period! You can intensively test our LILIAN at your entity for two weeks.

Please feel to contact us if you have any questions. With the help of our service partners, a presentation is possible at your place at any time.

We look forward to your messages:

Phone: +49 531 387 274 36
Phone Support: +49 531 387 274 38
What's App - Support: +49 531 387 274 36

E-Mail: info@lilianlabs.com
E-Mail - Support: support@lilianlabs.com

Follow us on Social Media:

 LinkedIn

 Instagram

 Facebook



WATER ANALYSIS
FOR TOMORROW

[POOLS.LILIANLABS.COM](https://pools.lilianlabs.com)



Lilian Labs GmbH
Salzdahlumer Straße 196
38126 Braunschweig -Germany

P. +49 531 387 274 36
info@lilianlabs.com

State: October 2024