

L A B S

Product catalogue 2026



LILIAN LABS

EDITORIAL

Dear readers,

since the successful launch of LILIAN V2 at Interbad 2024, we have been working intensively to further optimise LILIAN in terms of accessibility, ease of use and speed. These ongoing improvements are automatically made available to you via the LILIAN Manager software.

Furthermore, our LILIAN system is expanding its functionality and can now also be used for measuring drinking water and industrial water. We look forward to presenting our enhanced system to you for the first time at IFAT 2026 in Munich.

There, we will present the new areas of application, such as heating and cooling water as well as process water, in detail. The LILIAN is expected to be available for these specific applications from summer/autumn 2026.

We cordially invite you to see all the new features and improvements for yourself at this year's IFAT in Munich and Interbad in Stuttgart.

I hope you find this newsletter informative.

Kind regards



Dr. Alexander Rohr
Founder & CEO, Lilian Labs GmbH



Contact me

Dr.-Ing. Alexander Rohr
Founder & CEO

alexander.rohr@lilianlabs.com
+49 531 387 274 36

Happy Birthday Lilian Labs!

10 Years Anniversary

Meet us at:
Interbad Stuttgart, Germany (October)
IFAT Munich, Germany (May)



PRODUCT CATALOGUE 2026

GENERAL INFORMATIONS

Our mission	04
What is the LILIAN water analysis system all about?	05
What makes the LILIAN unique?	06
LILIAN Technology	07
Sustainability	08
Certificates and precision	09

PRODUCTS AND PRICING

LILIAN Pro Starterset.....	10
LILIAN Manager	11
SensoSticks	13
Accessories	15
Services	17

GET IN TOUCH

Contact data	18
--------------------	----

OUR MISSION

The goal of Lilian Labs

Water is a valuable resource whose quality is under acute threat due to many influences. At Lilian Labs, we want to ensure that everyone can be sure that the water available to them is of optimum quality, regardless of where and how it is used.

This is why Lilian Labs and its 26 employees have been bringing the LILIAN technology for mobile water analysis, which they developed themselves, to more than 14 European countries over the past 10 years. More than 2,000 companies now swear by LILIAN technology. LILIAN is 100% made in Germany.

01 INNOVATION

Our drive: Enhance existing methods better and better.

03 HEALTH

Our motto: Clean water analysis with no risk to health - mixing chemicals is oldschool.

05 EFFICIENCY

Our concern: Save time for you and your employees when checking your water quality.

02 SCIENCE

Our methods: Scientifically sound and recognized.

04 SUSTAINABILITY

Our goal: A system that is of long-term and sustainable benefit to all users.

06 QUALITY

Our principle: Compliance with high quality standards through development and production in Germany.

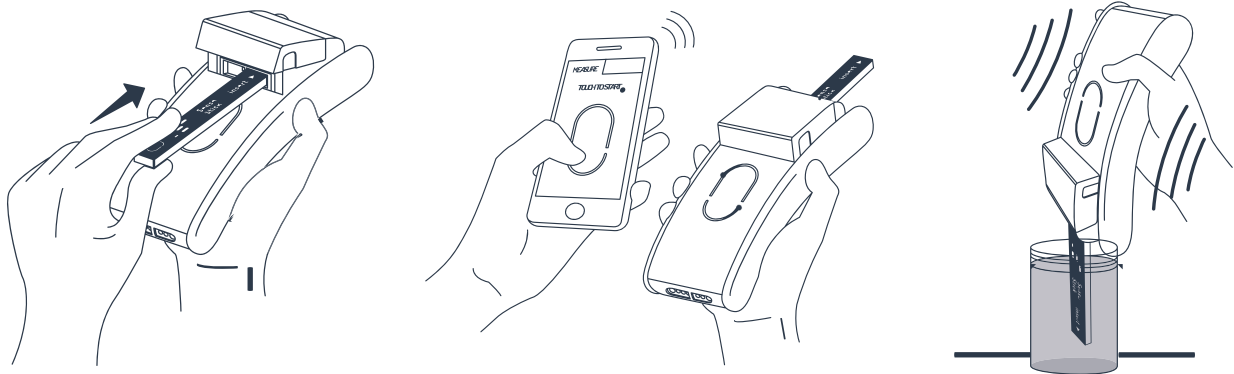


WHAT IS THE LILIAN WATER ANALYSIS SYSTEM ALL ABOUT?

LILIAN – the revolution in water analysis.

Experience water testing as easy as never before. LILIAN is the innovative photometer with a digital platform that takes care of the chemical sample preparation for you. Measure pH, chlorine and more at the touch of a button – in a flash and without error.

Simply insert the SensoStick into the LILIAN, connect to the app and start the measurement at the touch of a button. The rest of the measurement process takes place automatically in under a minute. The measurement accuracy complies with DIN 19643.



Your data is automatically recorded in the digital logbook. If any thresholds are exceeded, you will be notified immediately, ensuring comprehensive documentation and a swift response. The measurement data can also be seamlessly integrated into existing software via an interface.



WHAT MAKES THE LILIAN UNIQUE?

The LILIAN system is unique in the world.

With the LILIAN, you'll get unique advantages that no other photometer offers. Simplicity and time savings are particularly important elements if you are also faced with a shortage of skilled labour. With the LILIAN, healthcare professionals can concentrate on the essentials and even assistants can carry out reliable hygiene parameter measurements.



PRECISE RESULTS

The revolutionary technology ensures fast and accurate measurement results. Everyone gets the same results!



SAFE WATER TESTING

No more tedious handling of chemicals and no diluting. Protecting your health.



HUGE TIME SAVING

Within 60 seconds, the LILIAN System prepares, analyzes and documents all relevant values.



EASY HANDLING

The LILIAN measuring device is handy, wireless and easy to use. The measurement method is selected automatically.



SIGNIFICANT COST SAVING

Efficient staff deployment creates free space for other important tasks.



ENVIRONMENTALLY FRIENDLY DISPOSAL

The SensoSticks can be returned to us and will be recycled in an environmentally friendly way.



LILIAN TECHNOLOGY

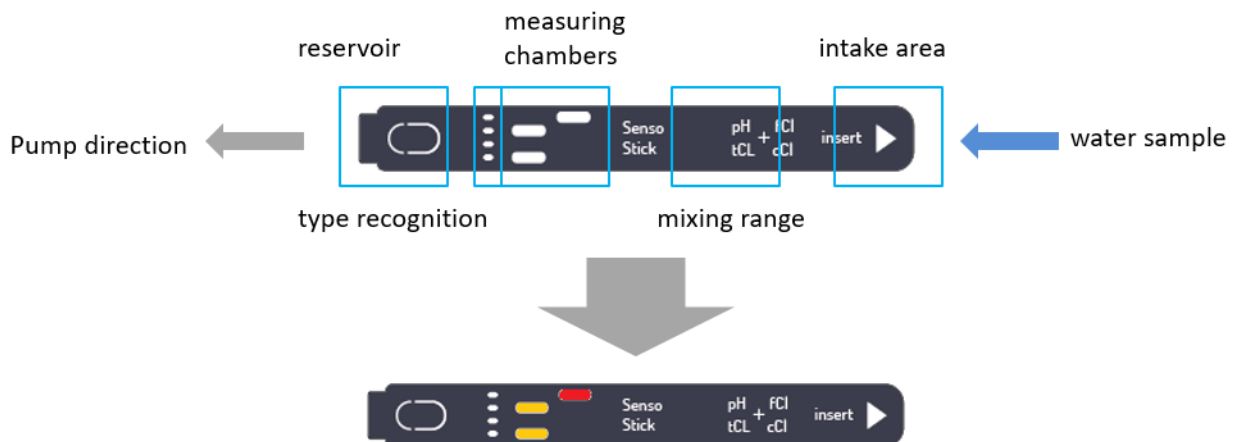
How exactly does the measuring method with LILIAN work?

The LILIAN measuring device is an advanced photometer that no longer uses cuvettes with which water samples have to be taken individually and chemicals added.

Instead, with the LILIAN you simply insert the SensoStick into the measuring device. This is a microfluidic element on which several micro-scale cuvettes are integrated. As soon as the measurement is started by pressing a button, a pump in the measuring device draws water into the SensoStick. The water sample is divided into different microchannels, each of which absorbs the chemicals and takes on the characteristic colour.

A microlab integrated into the SensoStick takes over the manual sample preparation required by conventional photometers. The SensoStick contains measuring windows, which the measuring device uses to determine the colouration and derive the corresponding water value.

As the measuring principle is based on the requirements stipulated by DIN19643 and ISO 7393-2 and "only" the manual sample preparation is automated, the LILIAN fully complies with the requirements of the authorities for regular monitoring of measurement and control technology. By automating and parallelising the measurements, the user is able to work significantly faster than before and is less prone to errors.



SUSTAINABILITY

Material Selection

The basic SensoStick mould is made of pure Plexiglas without the addition of any other substances. This makes used SensoSticks very suitable for further use.

Fewer chemical substances

The innovative design of the SensoSticks with microlabs ensures maximum accuracy with fewer chemicals. The SensoStick type for the pool area, for example, uses 40 times less chemical substances than photometric measurements with standard cuvettes.

Environmentally friendly packaging and shipping

Lilian Labs only sends parcels climate-neutrally with the GoGreen label. The filling material used when sending parcels is usually made from recycled cardboard remnants. No plastic is used for the sales boxes either.

SensoStick-Recycling

Returned SensoSticks are already being broken down by Lilian Labs into their components at specialised companies and returned to the raw material cycle.

In areas where plastic recycling is not possible, energy recovery is used. Primary energy sources such as crude oil or gas are usually used to generate energy and heat. This consumes valuable resources. Used SensoSticks can also be utilised instead. As the kilns operate at very high temperatures, the exhaust gases are free of pollutants. The chemical residues in the SensoSticks are completely decomposed during the process.



We were honoured with the „Golden Wave Award 2022“ in the „Green Technology“ category for our sustainability concept.

CERTIFICATES AND PRECISION

High measuring accuracy for the determination of water samples

Below you can see the Lilian Labs certificates for chlorine and pH. The measurement data and results on which this document is based were determined and calculated by an independent German institute. Feel free to compare these values with the certificates of other manufacturers, we are among the best!

Method validation data - Free chlorine

Method

Name	SensoStick Pool
Article number	#5012
Measurement	Free chlorine (FCI): sodium hypochlorite solution
Method	Photometry DPD method
Settlement proceedings	DIN EN ISO 7393-2
Measuring range	0.03 - 4.00 mg/l
Photometer	Lilian Pro
Cuvette	10 mm, PMMA

Process characteristics

Absolute standard deviation (N=10)	
Concentration level 0.060 mg/l Cl ₂ [s ₁]	0.0067 mg/l (12.7 %)
Concentration level 0.99 mg/l Cl ₂	0.013 mg/l (1.3 %)
Confidence interval (95%) at 1 mg/l	± 0.021 mg/l
Detection limit [3 - s ₁]	0.020 mg/l
Limit of quantification [10 - s ₁]	0.067 mg/l
Coefficient of determination R ²	> 0.99, related to the recovery function in the working range of 0.03 mg/l - 4.00 mg/l Cl ₂

Method validation data - pH value

Method

Name	SensoStick Pool
Article number	#5012
Measurement	pH value (pH)
Method	Photometry, indicator phenol red
Settlement proceedings	DIN EN ISO 10523
Measuring range	6,3 - 8,4
Photometer	Lilian Pro
Cuvette	10 mm, PMMA

Process characteristics

Measuring solution	Mean value (N = 3)	Abs. Standard deviation (N = 3)
	pH value	pH units
pH 6.30 Buffer solution	6,33	0,010
pH 6.50 Buffer solution	6,48	0,029
pH 6.88 Buffer solution	6,84	0,006
pH 7.00 Buffer solution	7,03	0,021
pH 7.50 Buffer solution	7,64	0,012
pH 8.00 Buffer solution	8,13	0,000

LILIAN PRO STARTERSET

The Lilian Pro starterset includes everything you need

Our LILIAN measuring device has only one button. In addition, an app that takes you by the hand, guides you through the measurement process and then documents everything automatically and digitally. Without frills or complicated processes, quickly and with the highest precision – with the certainty of having done everything right.

With the LILIAN water analysis system, time-consuming analysis procedures are a thing of the past: No more annoying sample preparation and post-processing, no more mixing of hazardous chemicals, no more errors in manual documentation. The time required for your work processes is reduced by 90%. This gives you and your employees more time to focus on what is really important.

- Simple measurement with the app at the push of a button
- Automatic sample preparation
- Precise measurement results through certified system (DIN19643 and ISO 7393-2)
- Digital documentation with the free LILIAN Manager
- Enormous time saving
- Everyone gets the same precise measurement results
- Incl. case and LILIAN measuring holder



LILIAN MANAGER

Cloud-based documentation tool with digital operating diary

Have you had enough of handwritten documentation and time-consuming transferring your water parameters to Excel? With the LILIAN Manager you can always keep an eye on your water quality from anywhere - in any facility, at every measuring location and at every measuring position. Recognise critical measured values immediately! Create reports and export the data to your PC or Mac.

The Manager can even be used as a digital operating diary. The LILIAN Manager can be used to digitally log both your measurement data measured with the LILIAN and all other values such as redox voltage, water temperature, etc.

And best of all, the LILIAN Manager can be used free of charge for all your pools:

- Cloud-based user and data management system
- Free evaluation and export tools
- No restriction on the number of users, measurements, locations, ...
- Digital operating diary: Logging of all measured values in your pools possible
- Automatic correction of measured values for special water, e.g. brine
- Integrated Direct measurements without registration
- Integrated Active chlorine calculation
- Available in 12 languages



Premium packages

There are additional premium functions that the customer can use for a certain period of time against payment. As a rule, a licence runs for one year, in the discounted "Season Pass" only for half a year.

Limit value and alarm system

Configure specific threshold values for your parameters and receive a push notification or email if the threshold values are exceeded. Your threshold values are automatically highlighted in green, yellow and red, depending on the default range, so that you can see at a glance whether everything is OK.

Interface (client-based API)

With the Manager interface, we also offer you the option of automatically exporting your data records to external IT structures. For example, existing software solutions such as pool and bath managers (e.g. TASKO) or system software can be supplied with the mobile measurement data recorded by the LILIAN via the interface.

The screenshot shows the LILIAN web interface for a sports pool. The breadcrumb navigation is: EINRICHTUNGEN / HALLENBAD WASSERSPASS / SPORTBECKEN / BECKENWASSER. The page title is "SPORTBECKEN" with a "GEHE" link. Below the title, there are dropdown menus for "ANSICHT" (Liste) and "ZEITRAUM" (Letzten 30 Tage). A toggle switch for "FEHLERHAFTHE MESSUNGEN EINBLENDEN" is currently turned off. The main data is presented in a table with the following columns: DATUM, UHRZEIT, GEMESSEN VON, PH-WERT (PH), FREIES CHLOR (MG/L), GEBUNDENES CHLOR (MG/L), GESAMTCHLOR (MG/L), and SAUREKAPAZITÄT (KS4.3). The table contains 8 rows of data for the dates 15.11.2023 and 14.11.2023. The pH values are highlighted in green (716, 713, 718, 717, 718, 716, 716). The free chlorine values are highlighted in red (UR, UR, UR, UR, UR, UR, UR). The bound chlorine values are highlighted in red (0.83, 0.76, 0.78, 0.77, 0.87, 0.87, 0.87). The total chlorine values are 0.85, 0.77, 0.80, 0.80, 0.89, 0.89, 0.87. The acid capacity values are all dashes (-), except for one row on 14.11.2023 at 11:24 which is highlighted in yellow (OR).

DATUM	UHRZEIT	GEMESSEN VON	PH-WERT (PH)	FREIES CHLOR (MG/L)	GEBUNDENES CHLOR (MG/L)	GESAMTCHLOR (MG/L)	SAUREKAPAZITÄT (KS4.3)
15.11.2023	15:01	Doering, Sebastian	716	UR	0.83	0.85	-
	08:33	Doering, Sebastian	713	UR	0.76	0.77	-
14.11.2023	14:29	Doering, Sebastian	718	UR	0.78	0.80	-
	12:52	Doering, Sebastian	717	UR	0.77	0.80	-
	11:24	Doering, Sebastian	-	-	-	-	OR
	10:30	Doering, Sebastian	718	UR	0.87	0.89	-
	10:19	Doering, Sebastian	716	UR	0.87	0.89	-
	09:00	Doering, Sebastian	716	UR	0.87	0.87	-

SENSOSTICKS

SENSOSTICK TYPE „POOL CL“ AND “POOL CL WAVE”



Parameter	Measuring range	Tolerance
pH value	6,3 - 8,4	+ - 0,03
Chlorine free	0,03 - 4,00 mg/l	+ - 0,03 mg/l
Chlorine total	0,03 - 4,00 mg/l	+ - 0,03 mg/l
Chlorine combined	calculated	calculated

SENSOSTICK TYPE “POOL BR” AND “POOL BR WAVE”



Parameter	Measuring range	Tolerance
pH value	6,3 - 8,4	+ - 0,03
Bromine free	0,05 - 9,00 mg/l	+ - 0,05 mg/l
Bromine total	0,05 - 9,00 mg/l	+ - 0,05 mg/l
Bromine combined	calculated	calculated

SENSOSTICK TYPE “POOL CL HR”



Parameter	Measuring range	Tolerance
pH value	6,3 - 8,4	+ - 0,03
Chlorine free	0,1 - 10,0 mg/l	+ - 0,1 mg/l
Chlorine total	0,1 - 10,0 mg/l	+ - 0,1 mg/l
Chlorine combined	calculated	calculated

SENSOSTICK TYPE “KS4.3 / TA”



Parameter	Measuring range	Tolerance
Total alkalinity	0,1 - 5,0 mmol/l 5,0 - 250,0 mg/l	+ - 0,1 mmol/l + - 5,0 mg/l

SENSOSTICK TYPE "CYA" (ICA / CYANURIC ACID)



Parameter ICA / Cyanuric Acid	Measuring range 5 - 120 mg/l	Tolerance +- 5 mg/l
---	--	-------------------------------

SENSOSTICK TYPE "ACTIVE OXYGEN"



Parameter Active oxygen	Measuring range 0,2 - 20,0 mg/l	Tolerance +- 0,2 mg/l
-----------------------------------	---	---------------------------------

SENSOSTICK TYP "CL02"



Parameter Chlorine dioxide	Measuring range 0,05 - 8,00 mg/l	Tolerance +- 0,05 mg/l
--------------------------------------	--	----------------------------------

SENSOSTICK TYP „PH-HR“ PH VALUE HIGH RANGE



Parameter pH value	Measuring range 7,0 - 11,0	Tolerance +- 0,1
------------------------------	--------------------------------------	----------------------------

SENSOSTICK TYP „CA2+/MG2+“ WATER HARDNESS



Parameter Water hardness	Measuring Range 0,05 - 28 °dH	Tolerance +- 10% of result
------------------------------------	---	--------------------------------------

For general measurement purposes, the tolerance depends on the specific measured value. The information refers to typical applications. For details, please refer to the brochure 'Certificates and Accuracy of LILIAN'.

ACCESSORIES



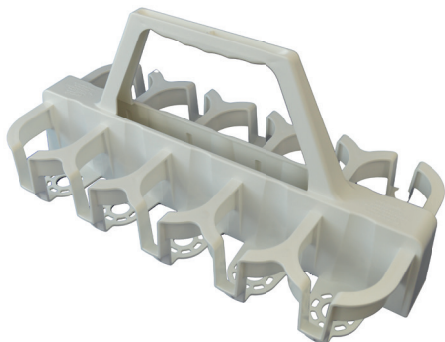
SMARTPHONE

Dust and waterproof Android smartphone (IP68). Please ask which model we currently have on offer.



MAINTENANCE ITEMS

Seals, springs and tweezers are available separately to restock the box included in the measuring case.



CUP HOLDER 10-FOLD

Simply collect water samples and then measure them centrally and directly one after the other to save even more time.



DIAGNOSIS SET

To regularly check the function of the LILIAN measuring device.



LILIAN CHARGER

A practical tool: Simply place the LILIAN in the tray and it will load automatically every time you put it down.



STICKSLIDE

The stick slide helps you insert the SensoSticks if you have trouble identifying the locking point.

SERVICES

MANUFACTURER MAINTENANCE

Lilian Labs stands for precision in water analysis. In daily use, your Lilian device is exposed to high loads. We therefore recommend annual maintenance of your device at Lilian Labs. In addition to the assurance that your system is working correctly, you will also receive a certificate confirming this. And best of all, you receive a one-year guarantee after every service!

Your benefits at a glance:

- o General inspection of the measuring device incl. minor repairs
- o Replacement of springs and seals
- o If necessary: Replacing the batteries
- o Installing the latest software
- o Checking the measuring accuracy
- o Certificate to confirm the measuring accuracy
- o Warranty extension for 1 year
- o Replacement device for the duration of maintenance



CONTACT DATA

Take advantage of the opportunity for a free trial period!
You can intensively test our LILIAN at your entity for two weeks.

Please feel to contact us if you have any questions. With the help of our service partners, a presentation is possible at your place at any time.

We look forward to your messages:

Phone: +49 531 387 274 36
Phone Support: +49 531 387 274 38
What's App - Support: +49 531 387 274 36

E-Mail: info@lilianlabs.com
E-Mail - Support: support@lilianlabs.com

Follow us on Social Media:

 LinkedIn

 Instagram

 Facebook



WATER ANALYSIS
FOR TOMORROW

[POOLS.LILIANLABS.COM](https://pools.lilianlabs.com)



Lilian Labs GmbH
Salzdahlumer Straße 196
38126 Braunschweig -Germany

P. +49 531 387 274 36
info@lilianlabs.com

State: April 2026